

From Rome to Trieste: Our Journey into Company Sustainability and ESG Certifications

OUR PILLARS

Sustainable Future:

BAT prioritize **long-term sustainability** and value creation through best-in-class management of all **ESG focus areas**. Our active engagement includes securing and minimizing natural resource usage, acknowledging their critical role in our operations. As a global enterprise, **we uphold our responsibility to society by driving excellence in environmental management**, thus making sustainability a pillar of our business.

Flexibility:

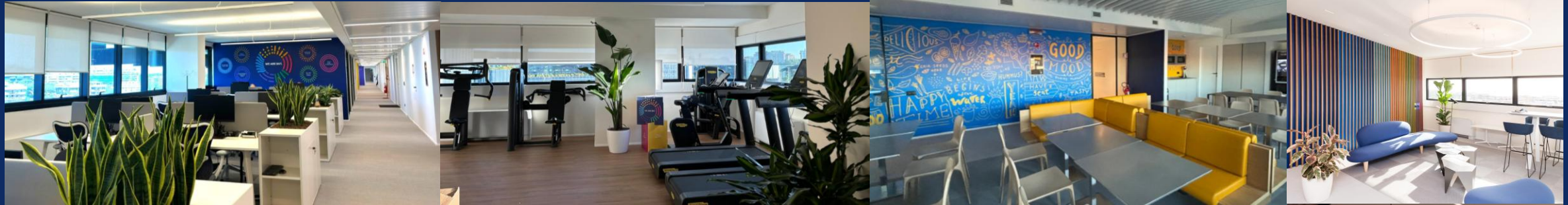
At BAT, we are committed to fostering a **culture of flexibility** that empowers our employees to thrive in both their professional and personal lives.

Well-being, Work-life balance & Engagement:

Within BAT, we not only **prioritize the well-being** of our employees and recognize the importance of **maintaining a healthy balance between work and personal life**, but we also actively **promote engagement activities** that allow them to experience greater serenity and enjoyment. These are fundamental components for us and for the professional lives of our teams.

Guided by these three pillars, we have built our BAT Italy reality, formed by two soul, our commercial core and operational hub: *Rome and Trieste*

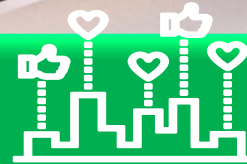
OUR NEW HOME IN ROME



ESG Certification
WELL Certification
(Gold Level)
Technology to support
ESG



Better **cost & saving**



2 floors

- 1 Office (Shared desk)
- 2 Common Area
- 20 Offices closed only for managers - but still accessible to all
- 7 meeting rooms



Engagement Areas

- Gym
- Game Area
- Soft Area
- Canteen



Sustainability

Climate Change

- New building with **Well Certification in common parts (led lights, sensor control automatic outdoor light, drinking troughs with filtered water)**
- District heating for indoor heating
- **Condominium CO2 detection system**
- 20 point of charge in office park space
- **Led lights and automatic light adjustment sensor outside (ALI system)**
- Water taps with proximity sensor
- Drinking troughs with **filtered water**
- Presence of **plants in spaces that contribute to O2 generation**
- **Low emissive character materials for VOCs** (Volatile organic compound)

Decrease in CO2 emissions (30%) with the palace change occurring in April 2024

Waste

- Paper and plastic reduction
- Waste segregation
- Smart-working (2 days in office)
- Zero waste to landfill
- Smart printing
- **Increase waste generation in 2024 due to building change (+40%)**
- **In 2025 we will achieve waste generation target (-25%)**

Natural Resources

- Decrease total water withdrawn because of building change without fountains (25%)
- Decrease total water withdrawn because we will insert in new building Water taps with proximity sensor (10%)

A Better Tomorrow Innovation Hub

Direct investment

up to **500 million**
over the next five years

Global Digital Hub

creation of a research and innovation ecosystem
to support BAT's digital transformation agenda

12 Production Lines

on an area of 20,000 m²
for European and global export,
as well as for the domestic market



Employment impact

approximately 600 direct jobs
and over 2,000 indirect jobs
in terms of local and national level

Industry 4.0

of global excellence
for the production of smokless products
and medicinal products
for nicotine replacement therapy

Environmental sustainability

high standards to minimise
environmental impact,
with the goal of carbon neutrality,
in line with the ESG BAT agenda

Sustainability Lighthouse - BAT Trieste designed to maximize energy efficiency and to be carbon neutral



Best In Class Energy Efficiency



Highest possible efficiency chiller with Waste Heat Recovery



State of the art Air Handling Unit

Onsite Electricity Generation



Photovoltaic panels => 40% of electricity demand



Windtree generating 10 MWh/a

Heat Generation



1 MW biomass boiler operating on wood pellets

Carbon Neutrality

100% Green electricity

100% Renewable energy coming from biomass and solar

